



Technical Characteristics

Dimensions:

Open	Closed
Length: 12.192 mm	Length: 12.192 mm
Width: 4.874 mm	Width: 2.550 mm
Height: 5.839 m	Height: 5.839 mm
Weight: ---	Weight: 8.500 Kg

Control Cabin System (CCS) - P/N-TK10761



Shelter MT has been designed and manufactured using materials proven and technologically advanced to ensure a long operating life of the system. Has the operating temperature range of -25 to +45 ° C. The SMT system meets all the requirements for humidity, wind, altitude, fungus, mold and salt spray. The shelter has been designed and manufactured for installation and protection of medium voltage rack. Activity installation of electrical panels has been carried out to care for Teknel Ltd. SMT can be transported to their destination by transport mode exceptional truck and ship. The container is equipped with three ports, a main entry and two secondary features in the upper part of a shatterproof glass. For each port is expected to scale with double handrails to ensure a safe and proper access to the facility.

Enviornemtal Conditons

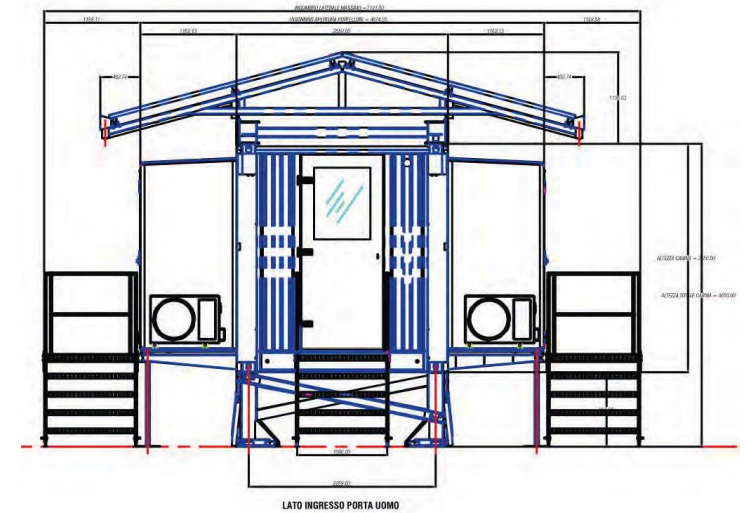
Temperature	-25° C / + 45° C
Altitude	< 1500 o.s.l.
Climate	Polluted
Humidity	100%
Earthquake	AF5
Salinity	56 Kg/m ³

Control Cabin System (CCS) - P/N-TK10761



Snow load

Exposition	0.9 (with wind)
Membership area	Alpin area 1
Altitude	1.500 mt
Thermal coefficient	Ct=1



Wind load

Area	6
Surface roughness	4
Coefficient of topography	1
Dynamic coefficient	1
Distance from sea	10 Km
Altitude	1.500 mt

Control Cabin System (CCS) - P/N-TK10761



Transport

Truck	✓
Ship	✓
Train	✓
Helicopter	✓

Supplied accessories

Ladders and steps in gridded and double handrail	n.3
Ropes and slings complete with accessories	n.2
Sinks of land to picket	n.2
Screw jacks	n.4
Leveling systems	n.7
Approved fire extinguishers	n.1
Cabinet for documents	n.1
Folding table	n.1
Folding chairs	n.2
Portable Heaters 2000W	n.2



DFRC standards and specifications

- | | | |
|---|---|--|
| <ul style="list-style-type: none">• CEI EN 61936-1• CEI EN 50110-1• CEI 11-27• CEI 64-8• CEI 11-37• CEI EN 50522• CEI EN 62305-1• CEI EN 60721-3-3+A2• CEI EN 60721-3-4+A1• CEI EN 61000-6-2• CEI EN 61000-6-4+A1 | <ul style="list-style-type: none">• CEI EN 60071-1+A1• CEI EN 60071-2• CEI 0-2• UNI 7011/72• ISO 668• ISO/PAS 17712• 1972• D.L.9/4/08 N81• Circ.121/89-25/7/89• DM 37/08• UNI EN 1363-1 | <ul style="list-style-type: none">• UNI EN 1634-1• UNI EN 1602• UNI EN 6946• UNI 9795• ISO 1946-1:2013• UNI EN 124641• UNI EN 378-1• UNI EN 378-2• UNI EN 378-3• UNI EN 12102• D.l.g.s.-27/01/10-n17 |
|---|---|--|

Control Cabin System (CCS) - P/N-TK10761

